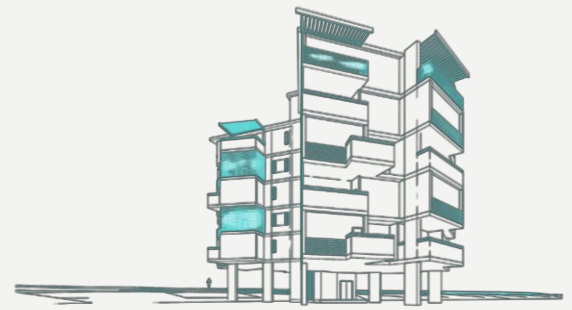


BIM FOR OWNERS WORKSHOP

BUILDING FOUNDATIONAL BIM FOR MORE PREDICTABLE PROJECT OUTCOMES

Discover How Setting the Foundation for Digital Twins is the Future of Building Management



Our Building Information Modeling (BIM) Workshop is your gateway to transforming how buildings are designed, constructed, and operated. In this dynamic and interactive workshop, you'll uncover the secrets of BIM technology that leading industry professionals are using to revolutionize the construction and real estate sectors. Whether you're new to BIM or looking to deepen your knowledge, our workshop offers a comprehensive program tailored to your needs.

COURSE OVERVIEW

This live, five-day virtual workshop helps building owners extract more value, reduce risk, and realize more predictable outcomes by understanding and leveraging Building Information Modeling (BIM). Attendees will learn the "What" and the "Why" of comprehensive BIM from an owner's perspective across the entire building lifecycle.

The BIM for Owners workshop focuses on an owner-centric approach that enables best practice implementation of BIM processes and provides a foundation for any type of BIM-based use case an owner needs. This Foundational BIM ensures deliverables from the designers and general contractors benefit the owner by establishing a worthy foundation for digital twins, operations, and other downstream use cases during the entire building lifecycle.

COURSE TOPICS

- BIM groundwork
- Owner challenges and obstacles
- Owner-centric BIM program competitive advantages
- Why BIM
- The benefits of digital twins
- Best practices for optimal BIM
- Elements of foundational BIM guidelines
- Asset information requirements
- Who is responsible for what data?
- Asset information workflow
- Asset information deliverables
- Owner's BIM integrator tasks
- Reality capture during project delivery
- Establishing a BIM PMO: operationalizing BIM for the enterprise
- Leveraging artificial intelligence
- Leading change and transformation
- + More!

WHO SHOULD ATTEND?

This workshop is designed for building owners who are committed to adopting cutting-edge technology to optimize their asset management strategy. Whether you own commercial, residential, or mixed-use properties, our workshop will provide valuable insights and skills that can be applied to any building type.

COURSE LENGTH: 5 half days

FORMAT: VIRTUAL, INSTRUCTOR-LED

KEY TAKEAWAYS:

- ✓ **Maximize efficiency and reduce costs:** Learn how BIM can streamline your operations, from pre-construction planning to long-term maintenance, helping you save time and money.
- ✓ **Enhanced decision making:** With BIM's precise and real-time data, make more informed decisions about your property, leading to higher-quality outcomes and increased tenant satisfaction.
- ✓ **Align with sustainability and compliance goals:** Discover how to use BIM to create more sustainable buildings, comply with evolving regulations, and achieve certifications that enhance your building's market value.
- ✓ **Network & connect:** engage with other forward-thinking building owners, industry experts, and BIM professionals. Exchange ideas, experiences, and strategies for implementing BIM in your operations.
- ✓ **Active participation & learning:** Our workshop doesn't just tell you about the benefits of BIM; it shows you. Participate in live practical sessions that will empower you to effectively apply BIM strategies to your properties.
- ✓ **Develop your personal action plan:** Walk away from this workshop with a **BIM action plan** that your company can use to leverage BIM and enhance business outcomes.

BIM FOR OWNERS WORKSHOP: BUILDING FOUNDATIONAL BIM FOR MORE PREDICTABLE PROJECT OUTCOMES

ABOUT THE FACILITATOR

JOHN STEBBINS, COURSE FACILITATOR, SENIOR PROGRAM MANAGER



John Stebbins is one of the earliest industry practitioners of Building Information Modeling (BIM) and has been utilizing digital design and construction technologies for over 30 years. He is a well-known and highly respected expert who specializes in BIM strategy, project planning, and execution, and he has supported the world's largest owners digitally transform their operations. In addition, John has taught college and university-level BIM classes at Orange Coast College and the University of Southern California (USC). John has given countless lectures and seminars as well as organized workshops regarding the power of BIM. He earned a BS degree in Urban Planning from Iowa State University.

THE BENEFITS OF BIM PMO (Program Management Office)

Communication: between project stakeholders and project vendors to maximize awareness of BIM-centric activities.

Collaboration: between all stakeholders involved in the PMO and BIM process delivery

Correlate: the varied activities of the BIM-centric workflow so that all the enterprise project stakeholders pull together to achieve PMO goals



SUSTAINABILITY INTEGRATION



Plan: Determine scalability & financial impacts



Design: Simulate 'what-if' options to maximize efficiencies



Construct: Monitor construction & data aggregation



Deploy: Transition static BIMs to dynamic performance DT framework



Operate: Monitor real-time performance to maximize efficiencies

ABOUT ANSER ADVISORY, PART OF ACCENTURE

Anser Advisory, part of Accenture, is an ENR Top 50 Program Management firm, and Great Place to Work® designated 2023 Best Workplaces in Consulting & Professional Services™, specializing in capital program advisory and consulting services, organization preparedness, strategy, funding, process development, program controls and project, program, and agency construction management. Anser offers owners industry best practices paired with innovative technologies that mitigate common pain points across the capital development cycle from pre-planning through construction and closeout within a diverse range of social and civil infrastructure end markets.